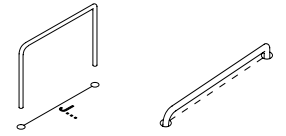


**1****Jumpwire
Draadbrug
Pontage**

◇ J



**MK166
SCHEMA / DIAGRAM /
ESQUEMA / SCHALTPLAN:**

WWW.VELLEMAN.BE

2

**Resistor - Weerstand -
Résistance - Widerstand -
Resistencia - Motstand -
Vastus - Resistenze**

◇ R1... R3: 100K

◇ R4 : 10

◇ R5, R6 : 10K

◇ R7 : 82K

◇ R8, R9 : 1K

◇ R10, R11 : 68

(Brown, Black, Yellow) - (Bruin, zwart, Geel) - (Brun, noir, Jaune) - (Braun, Schwarz, Gelb) - (Brun, Svart, Gul) - (Ruskea, Musta, Keltainen) - (Marrón, Negro, Amarillo) - (Castanho, Preto, Amarelo) - (Marrone, Nero, Giallo)

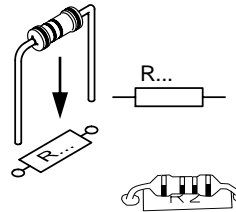
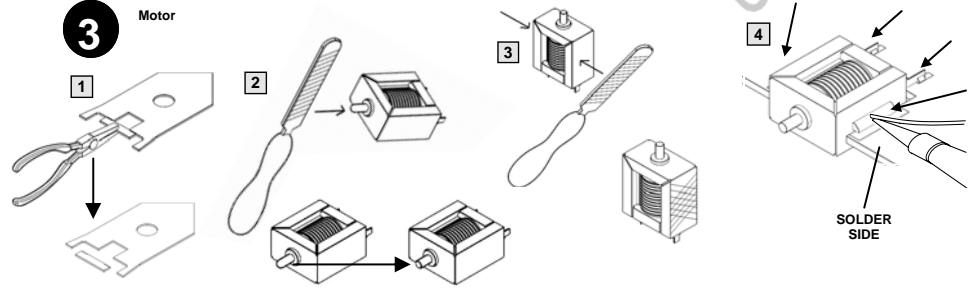
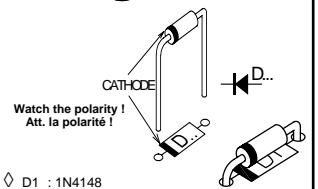
(Brown, Black, Black) - (Bruin, zwart, zwart) - (Brun, Noir, Noir) - (Braun, Schwarz, Schwarz) - (Brun, Svart, Svart) - (Ruskea, Musta, Musta) - (Marrón, Negro, Negro) - (Castanho, Preto, Preto) - (Marrone, Nero, Nero)

(Brown, Black, Orange) - (Bruin, zwart, Oranje) - (Brun, noir, Orange) - (Braun, Schwarz, Orange) - (Brun, Svart, Oranje) - (Ruskea, Musta, Oranssi) - (Marrón, Negro, Naranja) - (Castanho, Preto, Laranja) - (Marrone, Nero, Aranciato)

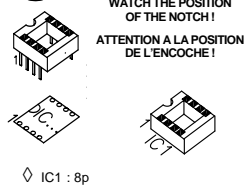
(Grey, Red, Orange) - (Grijs, Rood, Oranje) - (Gris, Rouge, Oranje) - (Grau, Rot, Orange) - (Grå, Röd, Orange) - (Harmaa, Punainen, Oranssi) - (Gris, Rojo, Naranja) - (Cinzeno, Encarnado, Laranja) - (Grigio, Rosso, Aranciato)

(Brown, Black, Red) - (Bruin, zwart, Rood) - (Brun, Noir, Rouge) - (Braun, Schwarz, Rot) - (Brun, Svart, Röd) - (Ruskea, Musta, Punainen) - (Marrón, Negro, Rojo) - (Castanho, Preto, Encarnado) - (Marrone, Nero, Rosso)

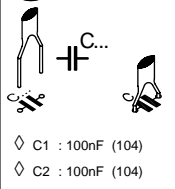
(Blue, Grey, Black) - (Blauw, Grijs, Zwart) - (Bleu, Gris, Noir) - (Blau, Grau, Schwarz) - (Blå, Grå, Svart) - (Sininen, Harmaa, Musta) - (Azul, Gris, Negro) - (Azul, Cinzeno, Preto) - (Blu, Grigio, Nero)

**3****Motor****SOLDER
SIDE****4****Diode**

◇ D1 : 1N4148

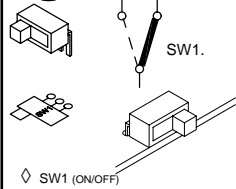
5**IC socket**

◇ IC1 : 8p

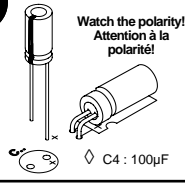
6**Ceramic capacitor**

◇ C1 : 100nF (104)

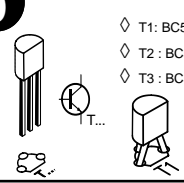
◇ C2 : 100nF (104)

7**Switch**

◇ SW1 (ON/OFF)

8**Electrolytic capacitor**Watch the polarity!
Attention à la polarité!

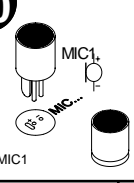
◇ C4 : 100µF

9**Transistor**

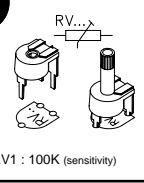
◇ T1: BC547B

◇ T2 : BC547B

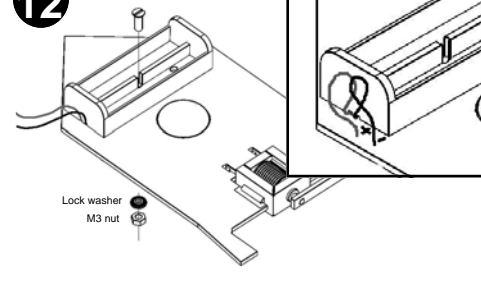
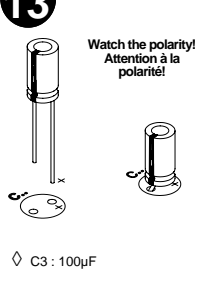
◇ T3 : BC547B

10**Microphone**

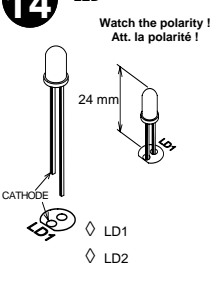
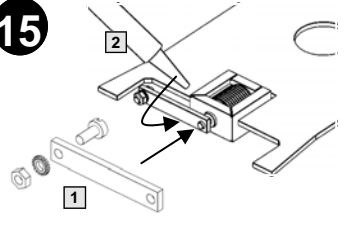
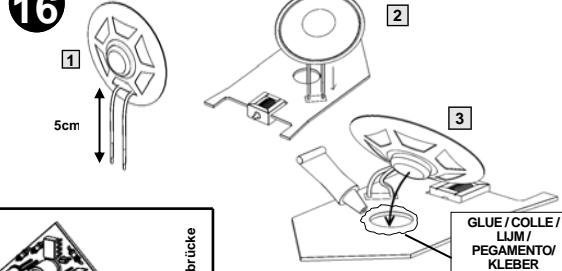
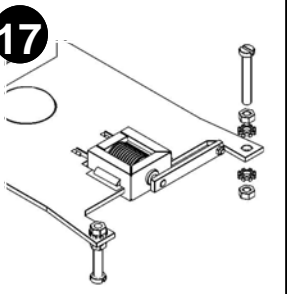
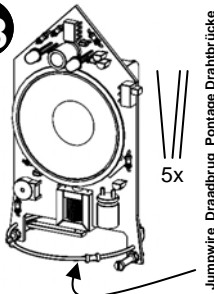
◇ MIC1

11**Trimmer**

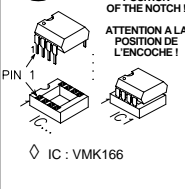
◇ RV1 : 100K (sensitivity)

12**M3 bolt 6mm**Lock washer
M3 nut**13****Electrolytic capacitor**Watch the polarity!
Attention à la polarité!

◇ C3 : 100µF

14**LED**Watch the polarity!
Att. la polarité!◇ LD1
◇ LD2**15****16****Loudspeaker**GLUE / COLLE /
LJJM /
PEGAMENTO /
KLEBER**17****18**

Jumpwire Draadbrug Pontage Drahtbrücke

19**IC**WATCH THE POSITION
OF THE NOTCH!
ATTENTION A LA POSITION
DE L'ENCOCHE!

◇ IC : VMK166

**2x AAA
Battery**

MK166 Manual edition 1